

# the outdoor classroom

## help a london park

The Mayor of London, Boris Johnson, launched the Help a London Park scheme in 2009 as part of his commitment to clean up and improve the capital's run down green spaces.

The Mayor pledged £4 million for ten parks to be selected by Londoners following a public vote. The winners were announced by the Mayor in March 2009 and Crane Valley Park topped the poll. As one of the winning parks a £400,000 grant was awarded to make it a cleaner, safer and greener park which local communities want to visit.

Crane Valley Park is a cross-borough park which includes a variety of largely Council owned green spaces in the Crane Valley. This project focuses on the stretch from Craneford Field in Twickenham to Pevensey Road Nature Reserve, in the boroughs of Richmond and Hounslow.

The project will open up access to previously unwelcoming parts of the site, improving infrastructure and creating a stronger sense of identity for the Crane Valley Park. It will also help to link communities along either side of the river, encouraging them to enjoy a positive experience in the heart of a wonderful open space.

The London Borough of Richmond upon Thames [www.richmond.gov.uk](http://www.richmond.gov.uk) lead the project and are working closely with:

London Borough of Hounslow  
<http://www.hounslow.gov.uk/>

Friends of the River Crane Environment (FORCE)  
<http://www.force.org.uk/>

London Wildlife Trust  
<http://www.wildlondon.org.uk/>

Greater London Authority  
<http://www.london.gov.uk/>

As part of this project an outdoor classroom has been developed for the use of schools, youth organisations and families, in Crane Park. The nearest entrance is to be found on the Hanworth Road, Richmond.

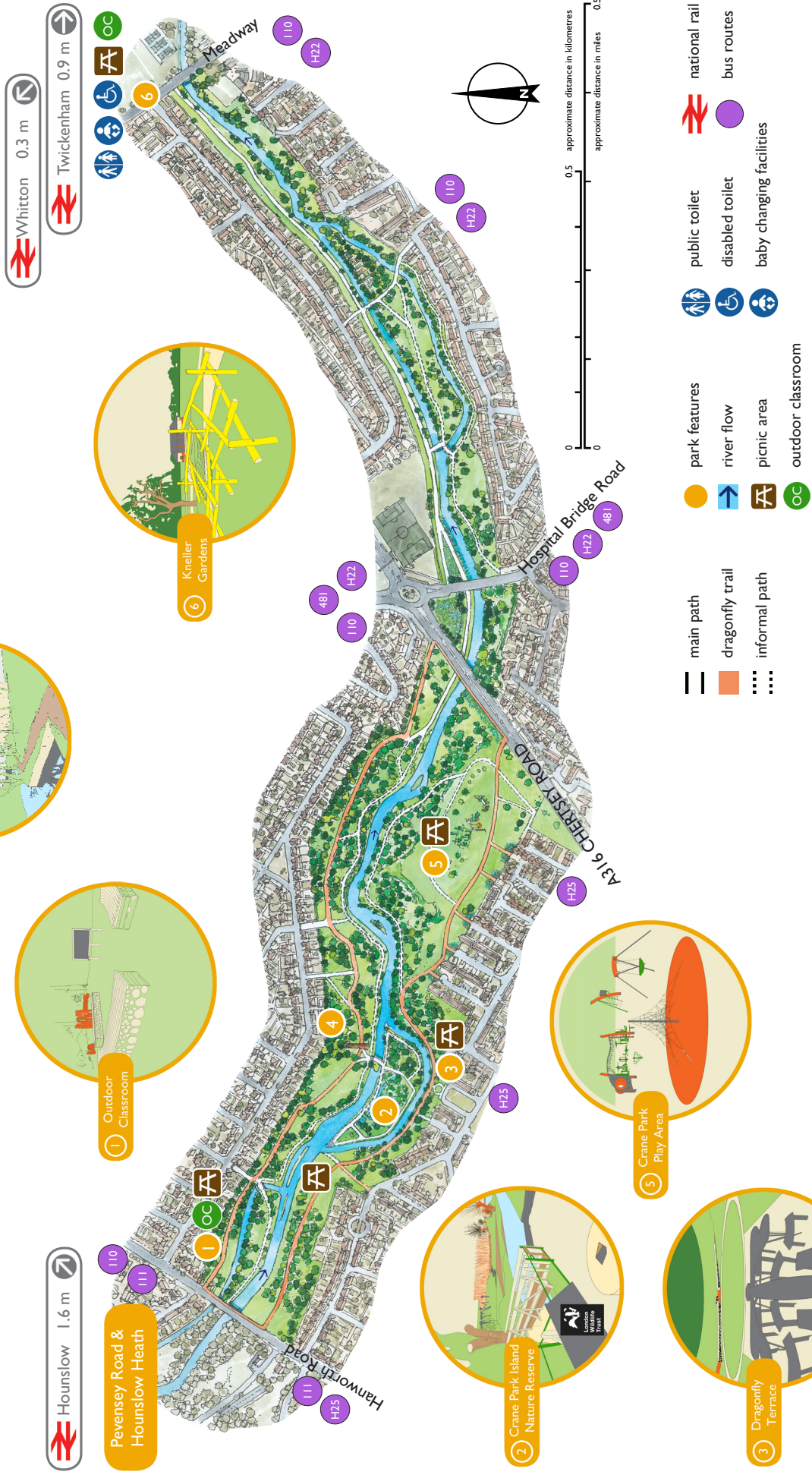
Many of these resources could be used on this site, some have been specifically adapted for use there.

The classroom area includes two cameras positioned to take images of wildlife in the park. If you would like further information about these cameras, or would like to make use of them please contact [parks@richmond.gov.uk](mailto:parks@richmond.gov.uk)

# the outdoor classroom

## help a london park

# Crane Park



# the outdoor classroom

## help a london park

